



## MARS 5

SOLAR WALL LIGHT



# INTRODUCTION

Product specifications

01 FRONT COVER

02 CATALOG

03  
~  
04 MAIN  
ADVANTAGES

05 SPECIFICATIONS

06 OPTICAL FIGURE

07 DIMENTION  
FIGURE

08 MORE DETAILS

09 CORE  
TECHNOLOGY

10 INSTALLATION  
INSTRUCTIONS

11 PACKAGE DETAIL

12 APPLICATION

# Product Advantage

ALS Technology Guarantees 10 Continuous Working Nights  
TCS Technology Ensures Longer Battery Lifespan

## Modern Minimalist Design

Soft lighting, beam angle up to 180°  
Perfect meet the EU standards of color  
temperature and non-glaring requirements.





# Product Advantage

ALS Technology Guarantees 10 Continuous Working Nights  
TCS Technology Ensures Longer Battery Lifespan



Apply for more scene



**Item : SWL-18**

Light Brightness	1000 Lumens
------------------	-------------

**Solar panel**

Power	Monocrystalline , 1.5W
-------	------------------------

**Li-ion battery**

Capacity	3.7V/2000mAH (7.4WH)
----------	----------------------

Charging/Discharging Temp	0~45°C / -20~60°C
---------------------------	-------------------

Charging Time	7H
---------------	----

LED	2835 20pcs
-----	------------

Color Temp	4000K , Ra 80+
------------	----------------

Efficiency	190lm/W
------------	---------

UV LED	-
--------	---

**Performance**

Lighting Time in Rainyday	>10 days
---------------------------	----------

Control Mode	Button Switch , ON/OFF Long Press 1.5s
--------------	----------------------------------------

Lighting Mode	M1: 100LM + PIR 1000LM(10S) M2: 0LM+PIR 1000LM (10S) M3: 300LM(6H)
---------------	--------------------------------------------------------------------------

Mode Indication	Red LED : M1: One Blink M2: Two Blink M3: Three Blink
-----------------	-------------------------------------------------------

Capacity Indication	-
---------------------	---

PIR	Yes
-----	-----

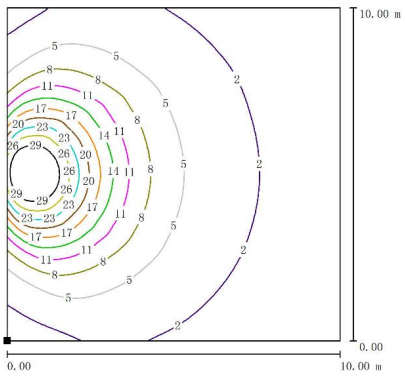
Core technology	ALS 2.4 / TCS 1.0
-----------------	-------------------

Soiar Panel Autoclean	-
-----------------------	---

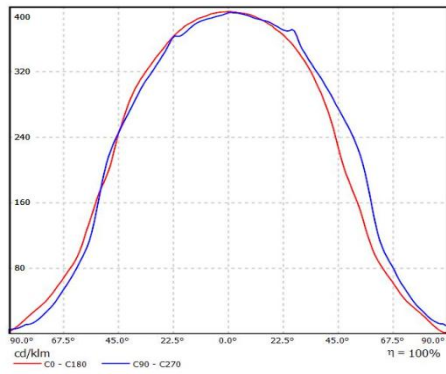
IP/IK Class	IP65 / IK10
-------------	-------------

Install Height	2.5M-3.5M
----------------	-----------

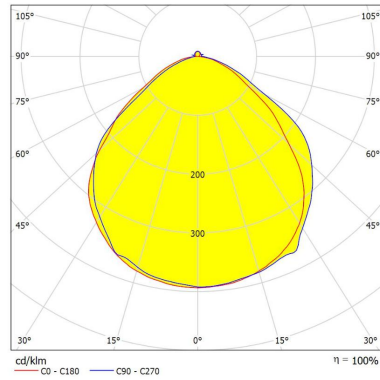
Road Simulated Diagram



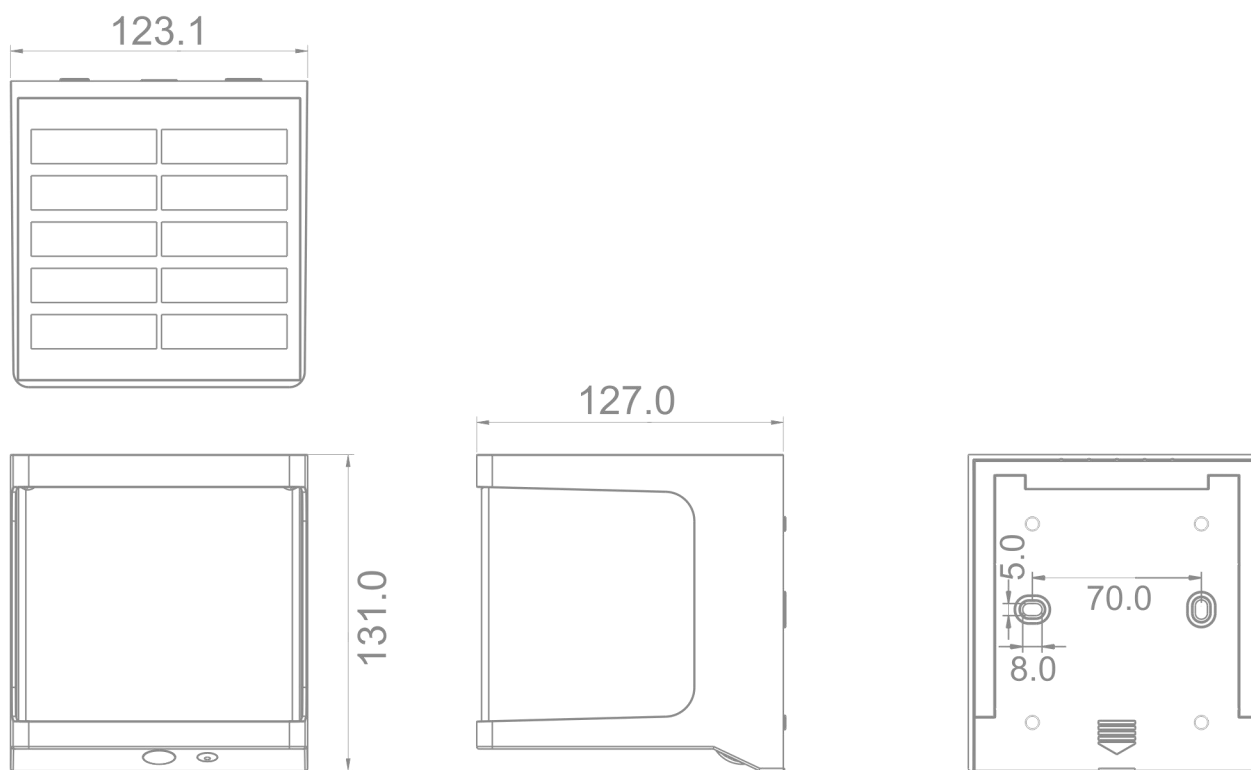
Illumination Curve



Luminance Distribution

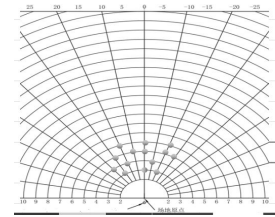


SOLAR LIGHT I DIMENTION FIGURE



### Detail Benefits

- Scientific light distribution
- Human body induction
- Lighting control induction
- OSRAM LED chip



Solar Charging Efficiency :>21%



High lumen LEDs  
190lm/W

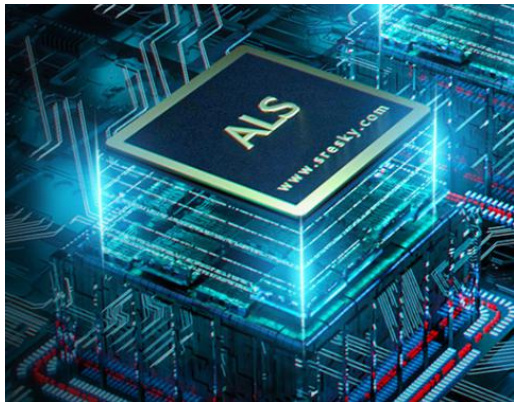


PIR : > 3m , 120°  
Switch

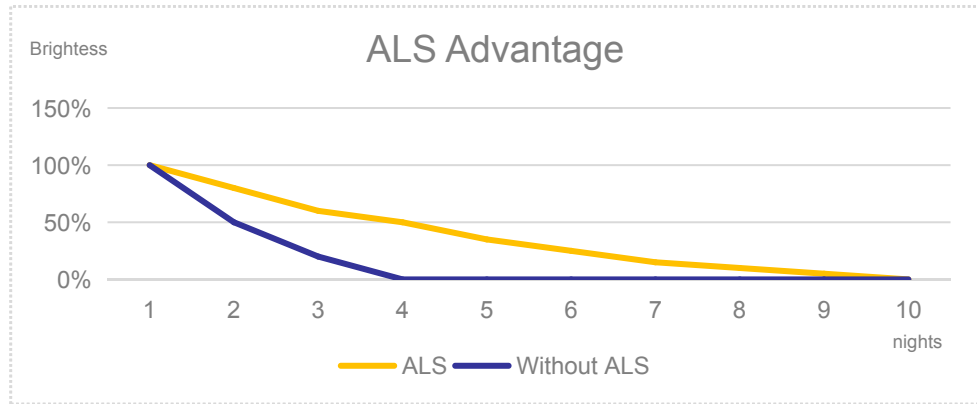


A Great Company should always pay the highest attention to the every detail design , and the craftsmanship spirit should be filled in the whole design process and mass production.

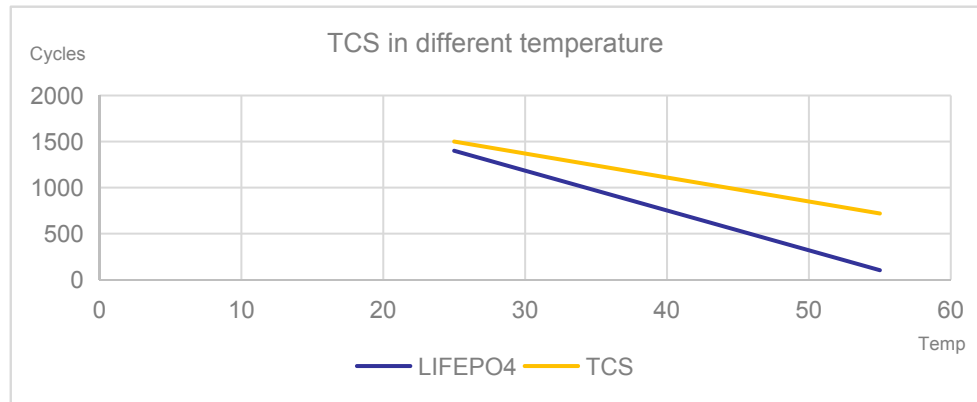




ADVANTAGE OF ALS

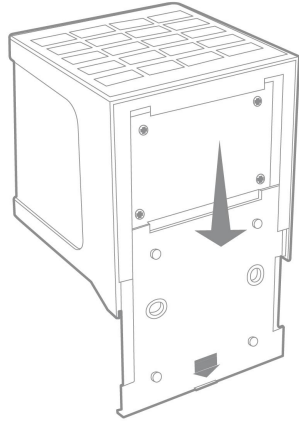


ADVANTAGE OF TCS

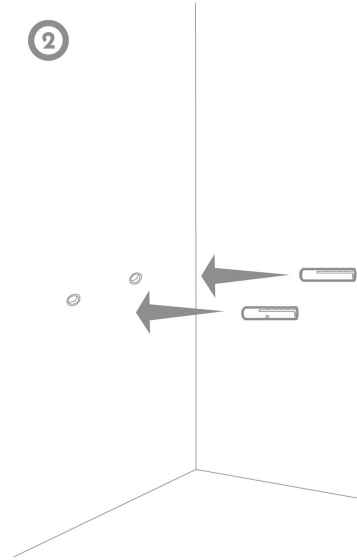


Fix the lamp on the wall with the screws.

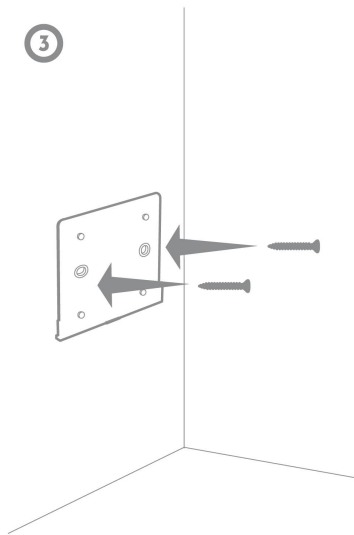
①



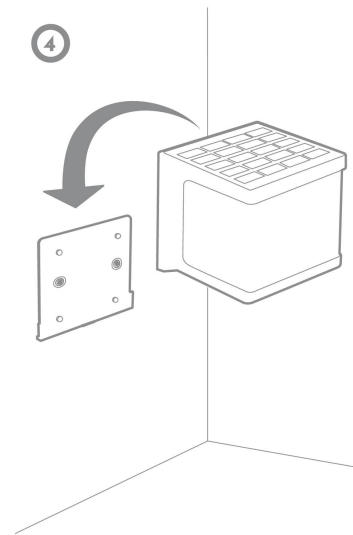
②



③



④



Keep the solar panel face the sunlight directly to ensure it can charge the inside Li-ion battery effectively

PRODUCT LIST  
BRACKET : 1 PC  
INSTRUCTIONS : 1 PC  
SCREW : 1 SET



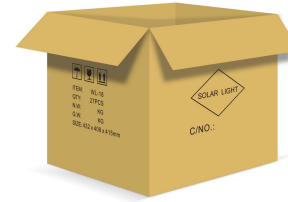
INNER BOX  
1 PC / 1 BOX



1 LAYERS  
1 LAYER = 27 BOXES



BRACKET CARTON  
27 BOXES / CTN



CARTON

LAYER NUMBER

INNER BOX

PRODUCT LIST

STEP 1

STEP 2

STEP 3

STEP 4

MODEL NO.	PACKING METHOD	PCS/CTN	QTY(PCS)	CTN QTY	CARTON SIZE(MM)	N.W.(KG)	G.W.(KG)
SWL-18	INNER BOX	1	1	1	138x130x134		
	CARTON	27	27	1	432 x 408 x 415		17.4

Net weight and gross weight  
are for reference only



THANKS  
VERY  
MUCH

