

ATLAS 1M

SSL-32M/34M/36M

SSL-38M/310M

2000LM~10000LM

**Win More Than
3500+ Tenders
In The World!**



SOLAR STREET LIGHT



Solar



ALS



Safety



IP65



TCS



Ray Sensor



Charging
temperature



Working
temperature



Heating
Version



3
YEARS
Warranty



10 CLOUDY DAYS STILL LIGHTING

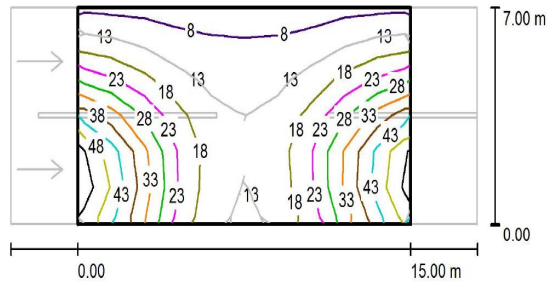
BMS technology speeds up the battery charging over 30%;
 Never stop lighting with New HI-technology-ALS 2.3 Up to 10 rainy or cloudy days.
 Powerful Lithium battery with 1500 cycles, widely used in new-energy car.
 4 Intelligent Core Technology broke the bottleneck of short working time of solar lights in rainy/cloudy days, and realized 100% lighting throughout the year.
 Each part can be replaced on the pole directly, save maintenance costs.



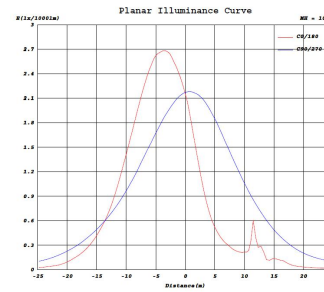
Item: ATLAS	SSL-32M	SSL-34M	SSL-36M	SSL-38M	SSL-310M
Light Brightness	2000LM	4000LM	6000LM	8000LM	10000LM
Solar panel					
Power	25W	37.5W	60W	75W	75W
Li-ion battery					
Capacity	14.8V 153.92WH 2.6AH/PCS	14.8V 269.36WH 2.6AH/PCS	14.8V 423.28WH 2.6AH/PCS	14.8V 577.2WH 2.6AH/PCS	14.8V 692.64WH 2.6AH/PCS
Charging / Discharging Temp	0~45°C / -20~60°C				
Charging Time	6.7H	7.8H	7.7H	8.4H	10H
LED (OSRAM)	3030, 20pcs	3030, 40pcs	3030, 80pcs	3030, 160pcs	3030, 160pcs
Color Temp	5700K, Ra>70	5700K, Ra>70	5700K, Ra>70	5700K, Ra>70	5700K, Ra>70
Efficiency	230lm/W	230lm/W	230lm/W	230lm/W	230lm/W
Types of Lighting	Type 2				
Performance					
Lighting Time in Rainy day	>10 Days				
Control Mode	Button Switch, ON/OFF Long Press 1.5s				
Lighting Mode	M1: 30% (PIR) till dawn M2: 100% (5H) + 25% (5H) (PIR) + 70% till dawn M3: 70% till dawn,				
Mode Indication	M1: red light, M2: green light, M3 orange light (press the button to switch between M1 (red), M2 (green), M3 (orange); 5S after mode indicates is power indicator				
Capacity Indication	Green: ≥70%; Orange: 30%~70%; Red: <30%				
Core technology	ALS2.2				
PIR	120°, 8m.Max				
IP / IK Class	IP65 / IK08				
Install Height / Distance	3m / 15m	4m / 15m	6m / 22m	8m / 28m	10m / 32m
Material	Aluminium & PC				

SSL-32M/34M

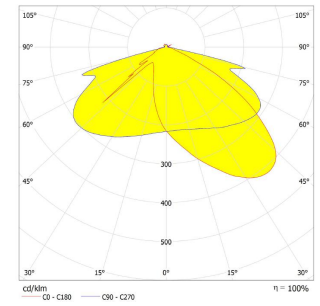
Road Simulated Diagram



Illumination Curve

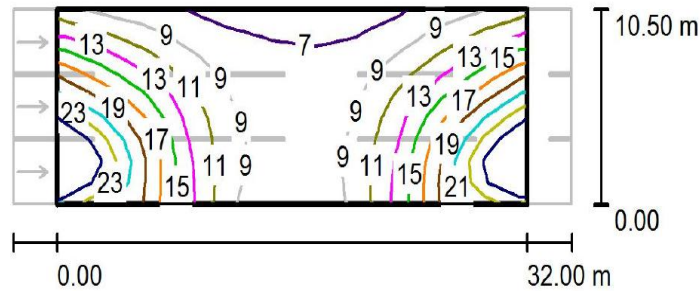


Luminance Distribution

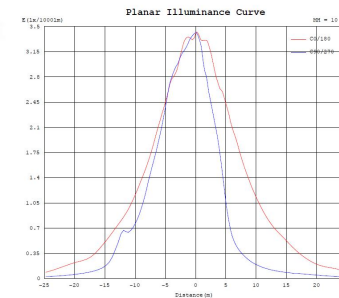


SSL-36M/38M/310M

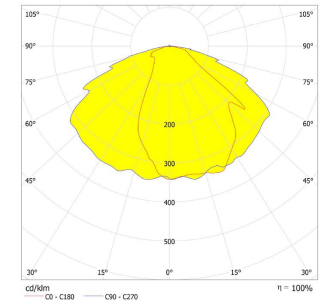
Road Simulated Diagram



Illumination Curve

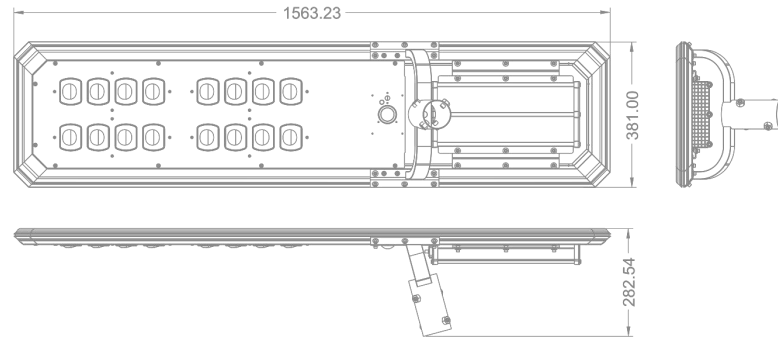


Luminance Distribution

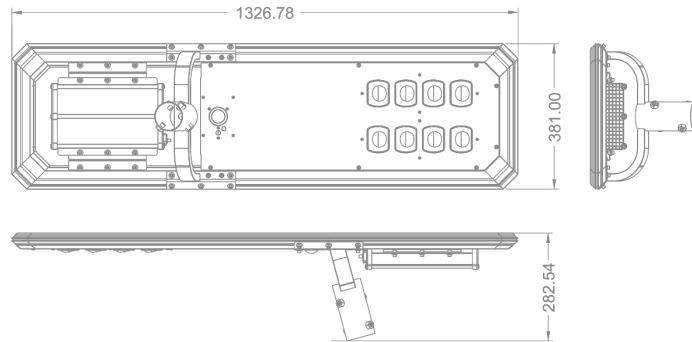


unit: mm

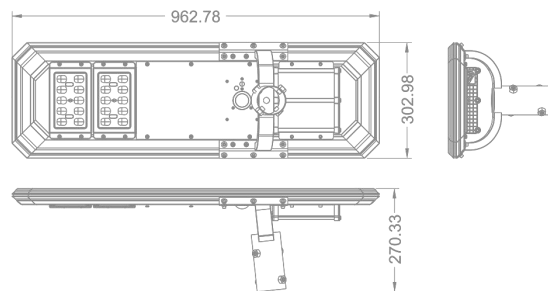
SSL-38M/310M



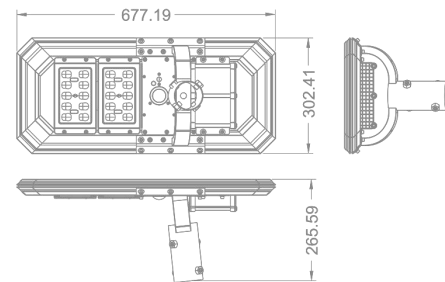
SSL-36M



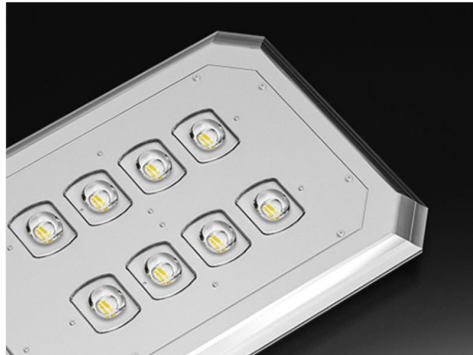
SSL-34M



SSL-32M



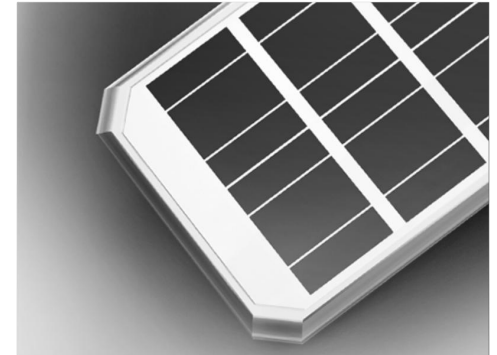




High Lumen LEDs 230lm/W



Battery Pack
Easy to Maintain



Monocrystalline
Solar Charging Efficiency: >21%



High Lumen LEDs 230lm/W



Bracket
Double Protection for Rust-Proof

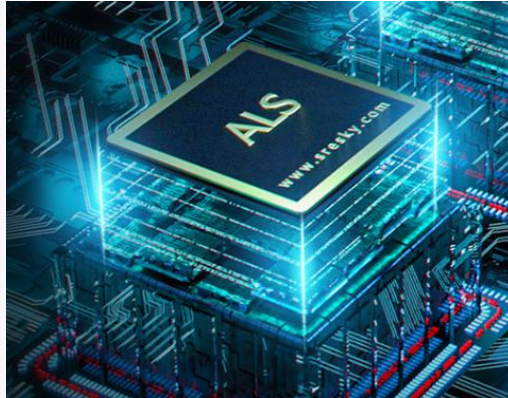


High Sensitivity PIR Sensor

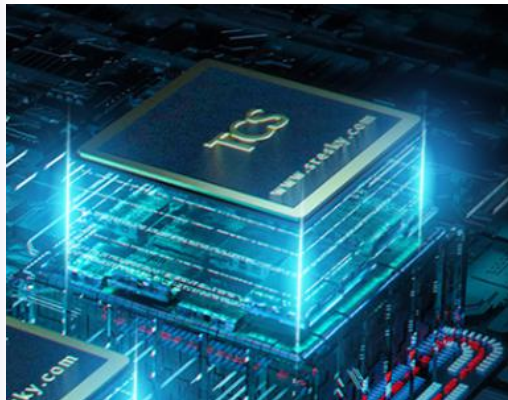
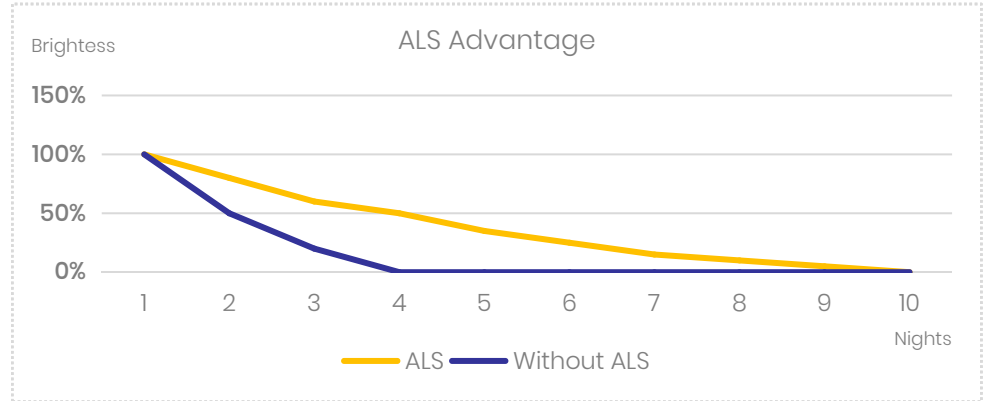


A Great Company should always pay the highest attention to every detail of design, and the craftsmanship spirit should be filled in the whole design process and mass production.

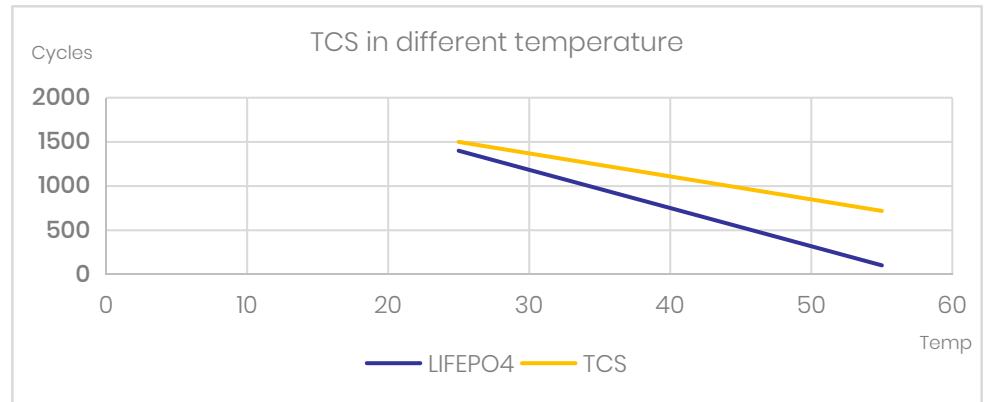




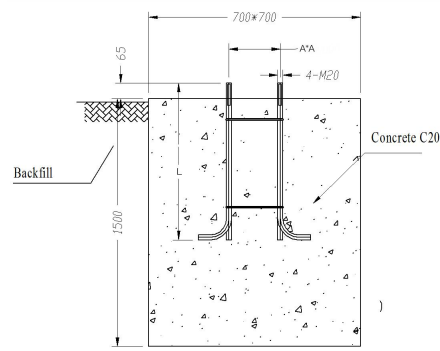
ADVANTAGE OF ALS



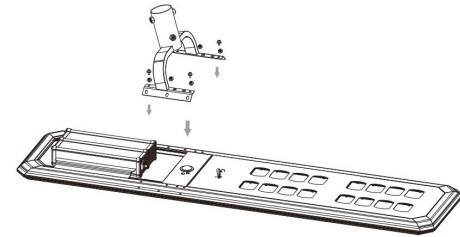
ADVANTAGE OF TCS



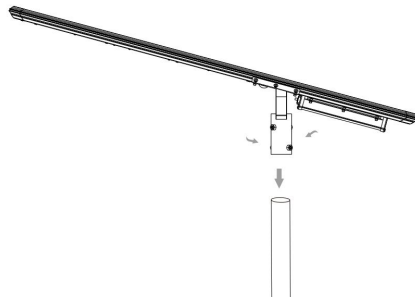
- 1 Dig a hole according to the size of the foundation cage, put the foundation cage into the hole and fix it with concrete C20.



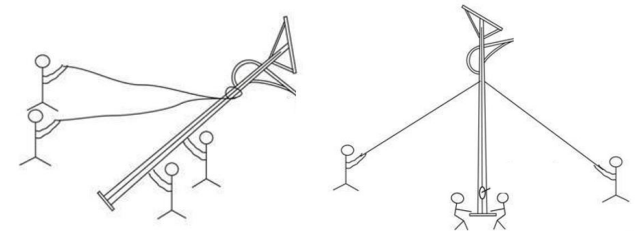
- 2 Use the supplied screws to fix the bracket on the lamp.



- 3 Use the supplied screws to fix the lamp on the pole.

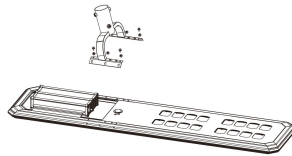


- 4 Lift the lamp pole by the person or machine, align the bottom flange of the lamp pole with the foundation cage, and then fix the lamp pole with screws.



PRODUCT LIST
Bracket: 1 PC

1 PC / 1 BOX



PRODUCT LIST



COLOR BOX



MODEL NO.	PACKING METHOD	PCS/CTN	QTY(PCS)	CTN QTY	CARTON SIZE(MM)	N.W.(KG)	G.W.(KG)
SSL-32M	Solar Light	1	1	1	779x332x403	10	13.9
	Bracket	2	2	1	330x215x282	2.35	2.98
SSL-34M	Solar Light	1	1	1	1060x329x398	14.5	18.7
	Bracket	2	2	1	330x210x280	2.3	2.9
SSL-36M	Solar Light	1	1	1	1440x370x495	28.8	30.8
	Bracket	2	2	1	410x210x280	2.48	3.13
SSL-38M/310M	Solar Light	1	1	1	1675x380x495	38	40
	Bracket	2	2	1	410x210x280	2.48	3.13

Net weight and gross weight are for reference only



S O L A R / S T R E E T / L I G H T

INNOVATING THE FUTURE OF SOLAR LIGHTING