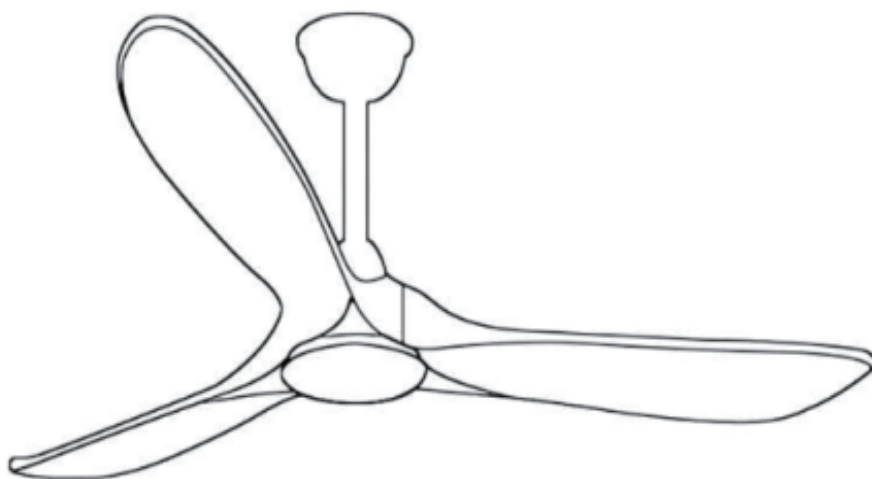


Owner's Manual



168034

WARNING : Read and follow these instructions carefully and be mindful of all warnings shown throughout.

READ AND SAVE THESE INSTRUCTIONS

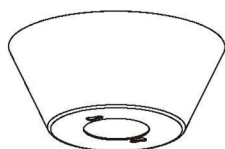
WARNING : TO REDUCE THE RISK OF FIRE, ELECTRICAL SHOCK, OR INJURY TO PERSONS, PLEASE OBSERVE THE FOLLOWING :

- 1]. To ensure the success of the installation, be sure to read the instructions and review the diagrams thoroughly before beginning.
- 2]. **To avoid possible electric shock, be sure electricity is turned off at the main power box before wiring.**
All electrical connections must be made in accordance with local codes, ordinances and/or the National Electric Code. If you are unfamiliar with the methods of installing electrical wiring and products, require the services of a qualified and licensed electrician as well as someone who can check the strength of the supportive ceiling members and make the proper installations and connections.
- 3]. **Make sure that your installation site will not allow rotating fan blades to come in contact with any object when fan is in operation. Blades must mounted at least 2.3m from the floor.**
- 4]. If possible, mount ceiling fan on a ceiling joist - the joist must be able to support the motion and weight of the moving fan. If the fan will be mounted on a ceiling outlet box, a 4" x 2-1/8" deep METAL octagon box is required ; one UL listed as " suitable for fan support ". The box and its supporting members must not be able to twist or work loose. **DO NOT USE PLASTIC BOXES.** Installation on a concrete ceiling should be performed by qualified personnel.
- 5]. Blades should be attached after motor housing is hung and in place. Fan motor housing should be kept in carton until ready to be installed to protect its finish. If you are installing more than one ceiling fan, make sure that you do not mix fan blade sets.
- 6]. After making electrical connections, spliced conductors should be turned upward and pushed carefully up into outlet box. The wires should be spread apart with the grounded conductor and the equipment - grounding conductor on one side of the outlet box and the " HOT " wires on the opposite side.
- 7]. Electrical diagrams are for reference only. Light kits that are not packed with the fan must be UL/ETL listed and should be installed per the light kit's installation instructions.
- 8]. After fan is completely installed, check to make sure that all connections are secured to prevent fan from falling and/or causing damage or injury.
- 9]. The fan can be made to work immediately after installation. There is no need to oil your fan.
The motor has permanently lubricated bearings.
- 10]. The fan must be turned off and stopped before reversing fan direction.
- 11]. **The fan is for downrod mount only.**
- 12]. **This fan is reversible.**
- 13]. **This fan is controlled by remote.**
- 14]. **This fan is suitable for indoor use.**

Unpack and inspect fan carefully to be certain all contents are included.



Mounting Bracket



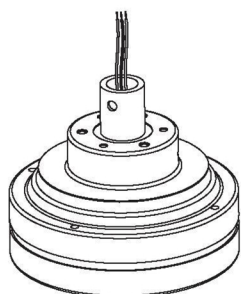
Canopy



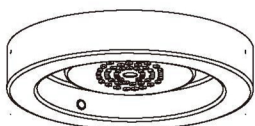
Downrod



Yoke Cover



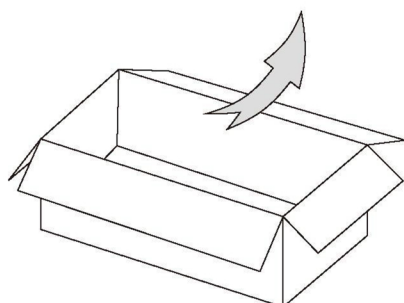
Fan assembly



Light kit pan



Glass lampshade



Unit pack / all in one box

Hardware Bag

For Mounting Bracket:

Flat Washer	x2		
Spring Washer	x2		
Expansion screw	x2		
Wood Screw	x2		

For Blade Installation:

Flat washer x 7 (one spare washer included)



Blade Screw x 7 (one spare screw included)



Spring washer x 7 (one spare screw included)



For Blade Balance:

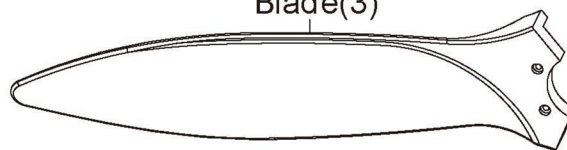
Balanced slide x 1



Weight block (5G x3)



Blade(3)



Remote Control



Hardware Bag

Wood Screw x 2



Wall plug anchor x 2



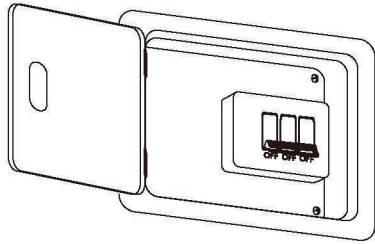
Wire Nut x 9



WARNING: blades should be at least 2.3 m from floor

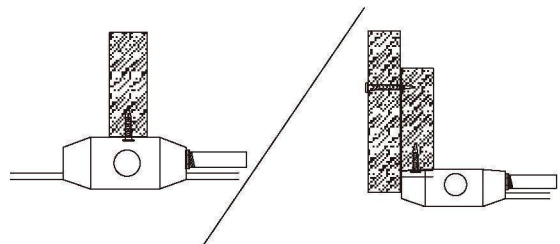
Note 1:

Turn off power at breaker box to avoid possible electrical shock.



Note 2:

Use metal outlet box suitable for fan support.
Outlet box must support 35 lbs min.

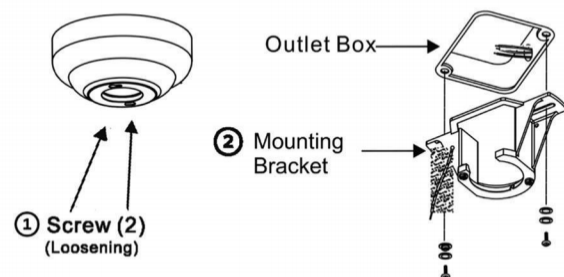


1. HANGING SYSTEM INSTALLATION

1A. Installing mounting bracket to ceiling outlet box

① Loosen the screws.

② Install mounting bracket to outlet box in ceiling by using screws included with the outlet box and washers from the hardware bag.



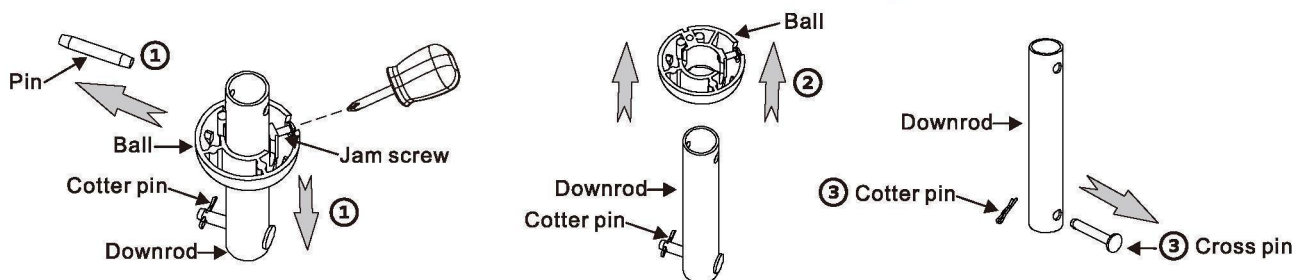
2. DOWNROD INSTALLATION

2A. Installing Downrod and Yoke

① Loosen the jam screw from the hanging ball and pull it down, remove the pin from downrod and keep it for step ⑥.

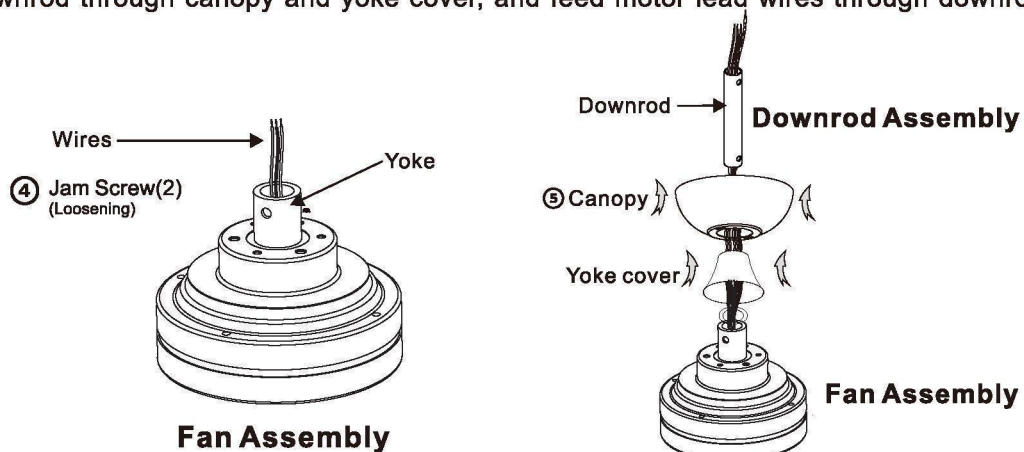
② Remove the hanging ball and keep it for step ⑦.

③ Remove cross pin and cotter pin from downrod and keep them for step ⑧.

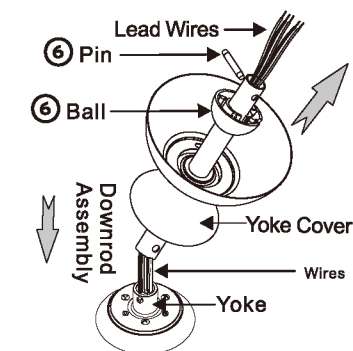


④ Loosen 2 downrod jam screws at yoke.

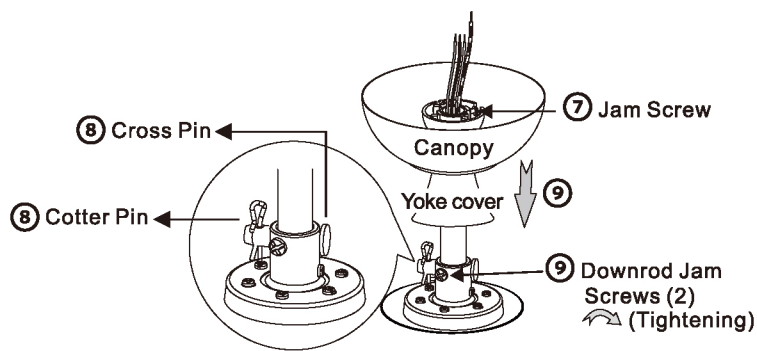
⑤ Insert downrod through canopy and yoke cover, and feed motor lead wires through downrod.



- ⑥ Insert hanging ball through downrod and insert the pin back into the downrod.
(Removed from step ① and ②)
- ⑦ Tighten the jam screw back to hanging ball and make sure it is tight. (Loosen from step ①)
- ⑧ Insert downrod assembly into yoke, insert the cross pin through yoke & downrod and secure with cotter pin. (Removed from step ③)
- ⑨ Tighten both downrod jam screws to further secure downrod. Pull down the yoke cover to cover yoke.



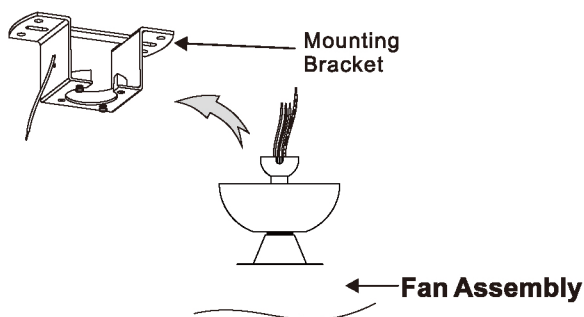
Fan Assembly



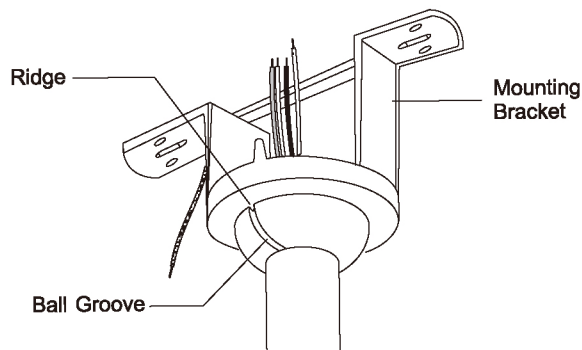
Fan Assembly

3. HANGING THE FAN ONTO MOUNTING BRACKET

- ① Lift fan assembly onto mounting bracket.



- ② Rotate fan so that the groove on the ball engages the ridge in the mounting bracket.

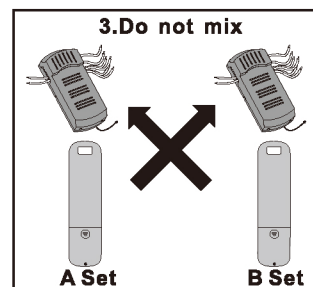
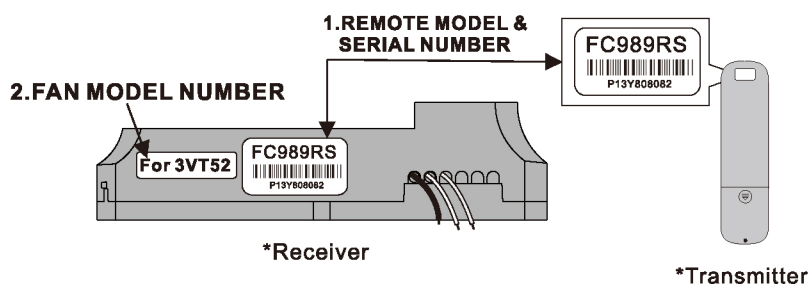


4. WIRE CONNECTION

4-1. Verify that serial Number & Model Number match on the Receiver and Transmitter NOTICE:

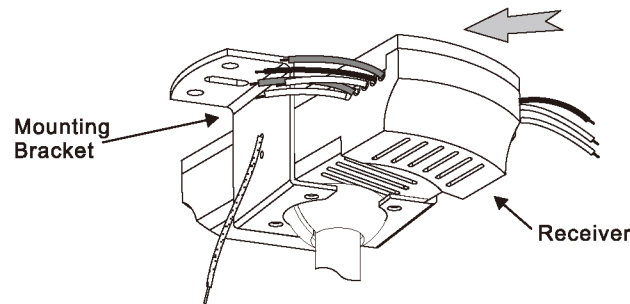
Many remote sets for DC fans look the same. This remote set is pre-paired and labeled at the factory, please note the following before operation:

- 1a. The Remote Model Number on transmitter and receiver must be the same.
- 1b. The Remote Serial Number will be the same on a pre-paired remote set. If it is different, it will need to be paired
2. Check the Fan Model Number label on Receiver 3RT52 and fan's model number in front page 3RT52 for proper operation. (There is no Fan Model Number on transmitter.)
3. Do not mix the remote sets if you are installing more than one fan.



4-2. Insert receiver into mounting bracket

NOTE: Do not squeeze all the wires while inserting the receiver into the mounting bracket.

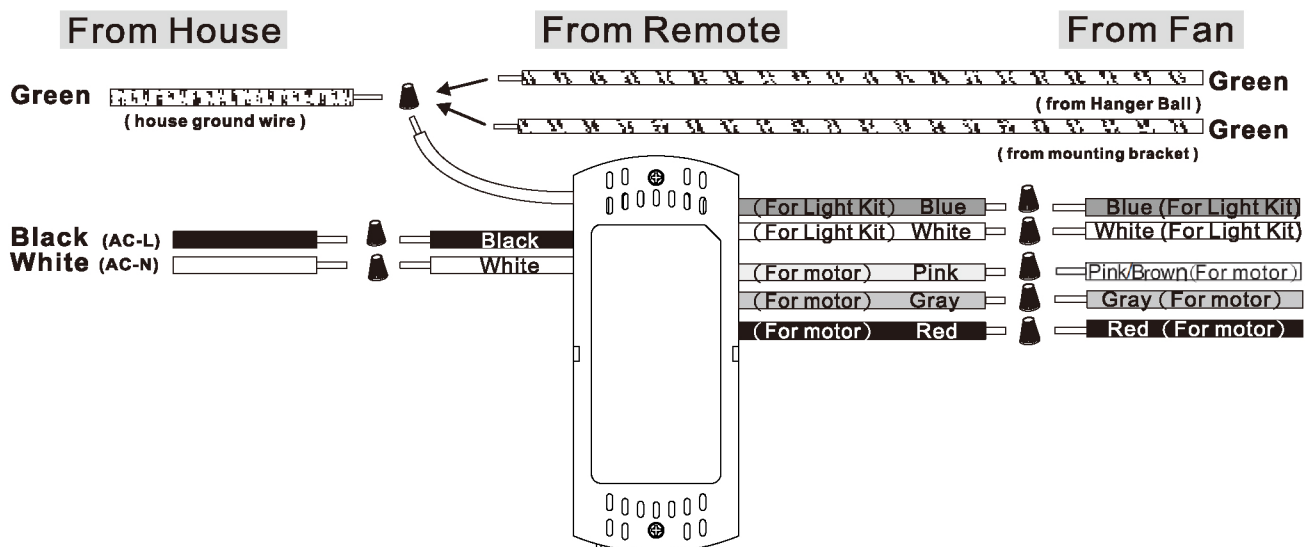


4-3. Making electrical wire connection

Follow diagram below and make sure that all exposed wires are secured inside wire nuts.

Note : Wires from house may vary in color. If the house wires do NOT include a ground wire (green) To prevent flickering, this unit must be grounded/earthed to the home's ground/earth; please consult an electrician.

After wiring is completed, gently push wires into junction box with wire nuts pointing upward.

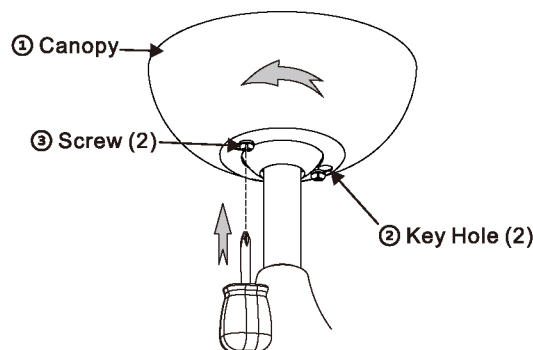


“ Special note: All Green grounding wires, from Hanger ball/Mounting bracket/Receiver, must be well attached to House Ground/Earth to prevent flickering of LED. ”

5. CANOPY INSTALLATION

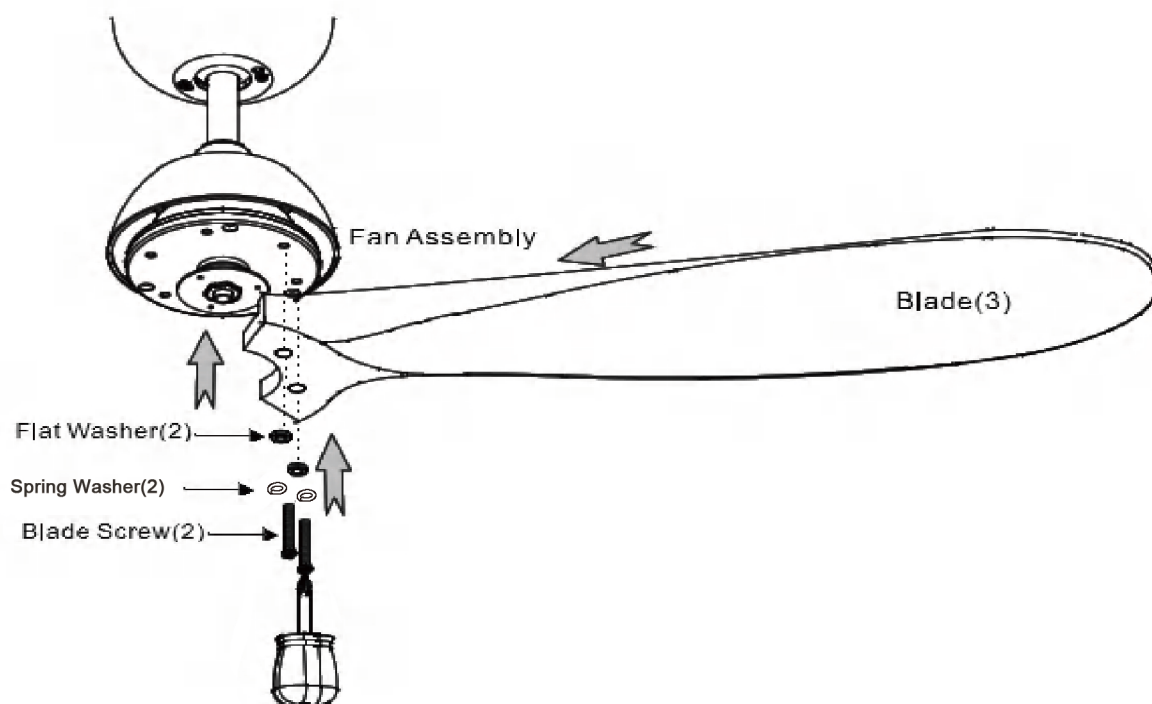
Note: Two screws are pre-installed on mounting bracket for canopy installation.

- ① Push up canopy until two screws pre-screwed on mounting bracket are engaged with two key holes on canopy.
- ② Rotate canopy slightly until two pre-installed screw heads are engaged in the narrow end of key holes.
- ③ Tighten both screws.



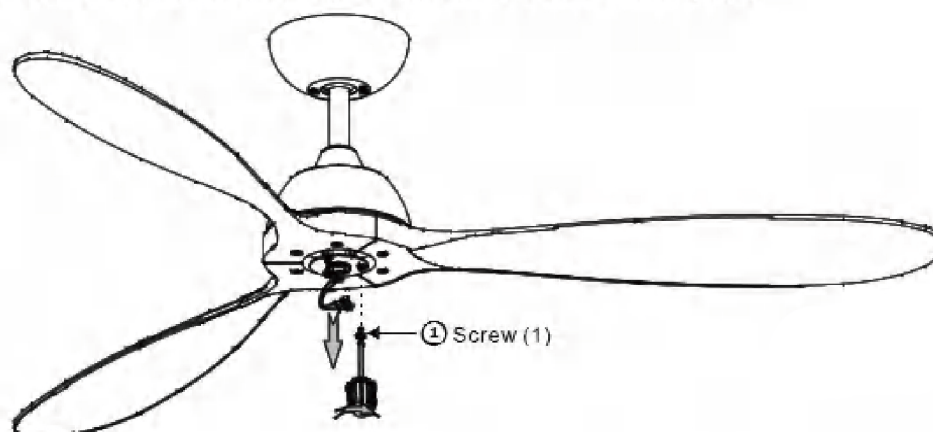
6. BLADE INSTALLATION

Attach blades to motor by using Screws provided in hardware bag.
(* Do this step for 3 times until 3 blades are installed firmly.)



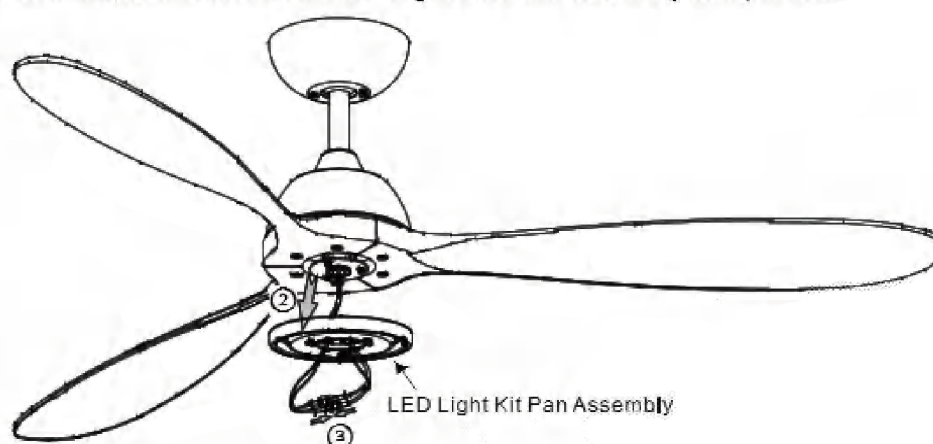
7. LED LIGHT KIT PAN ASSEMBLY INSTALLATION

① Remove one of 3 pre-screwed screws on adapter. (Keep the screw for step ⑤)

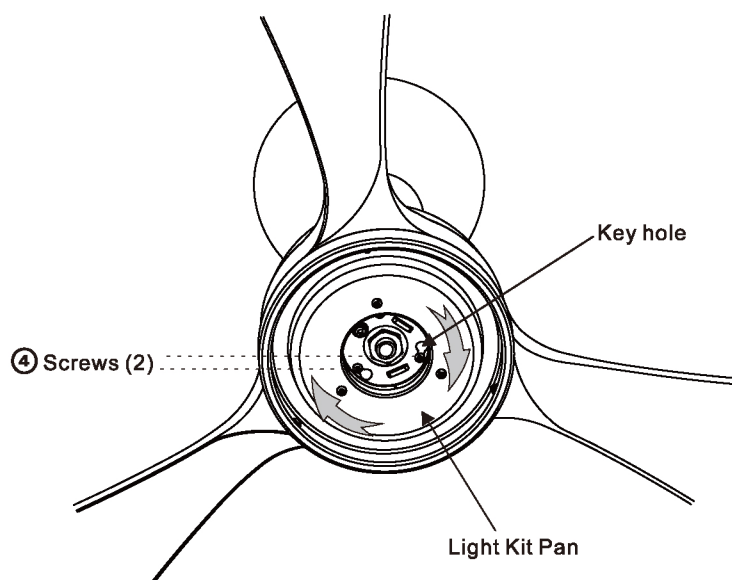


② Insert wires through center hole of LED Light Kit Pan Assembly.

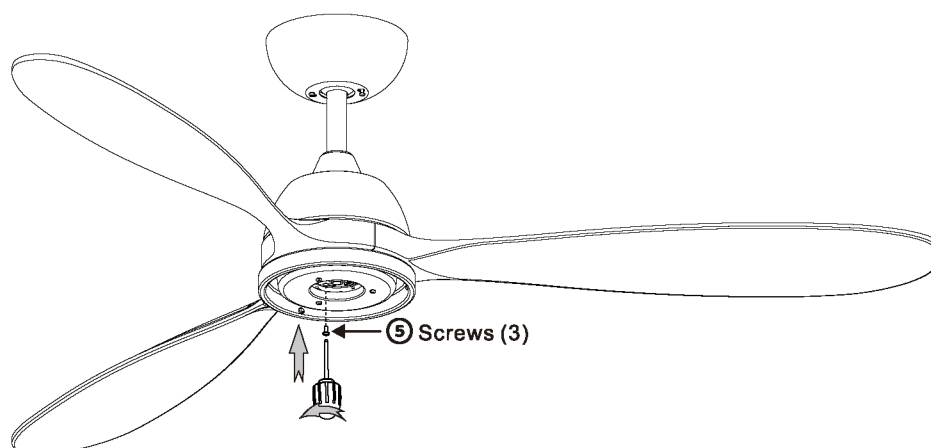
③ Connect 2-pin male terminal connector from LED Light Kit Pan Assembly to 2 pin female connector from fan.



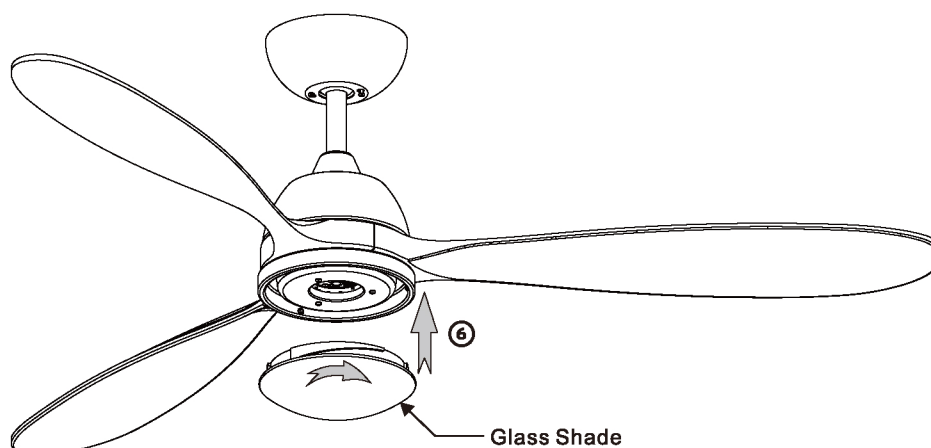
- ④ Rotate the Light Kit Pan slightly until two pre-installed screw heads are engaged in the narrow end of key holes.



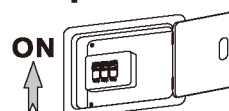
- ⑤ Attach screw (removed from step ①), and tighten 3 screws.



- ⑥ Attach Glass Shade onto the Light Kit Pan Assembly. Align one Groove in the Glass to one Tab on the Light Kit Pan Assembly. Secure by turning clockwise until snug. Do not over-tighten.

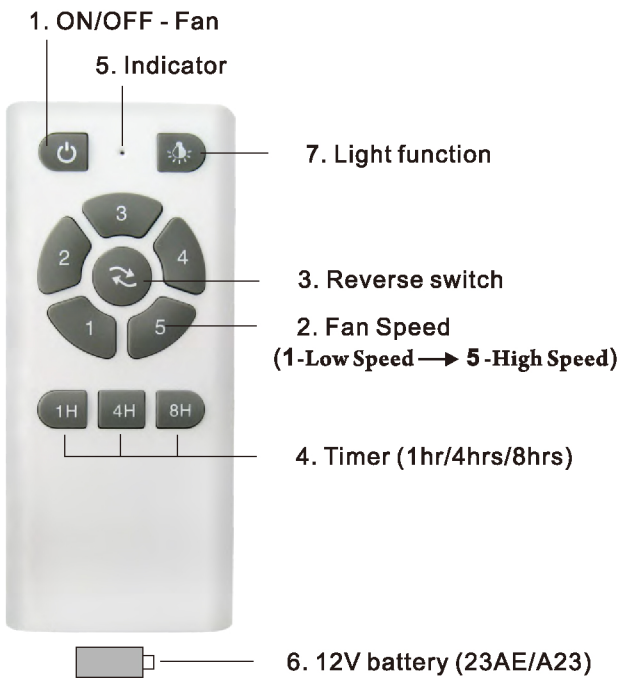


**Turn on power at breaker box, the fan is ready for operation!
(The receiver will have beep sound)**



OPERATIONAL INSTRUCTION

CAUTION: ONLY CASA VIEJA RECOMMENDED CONTROLS ARE COMPATIBLE WITH THIS FAN.



When pressed the buttons will make a Beep sound and the red indicator light will turn on.

1. Press button to turn the fan ON/OFF.

Warning: DO NOT PRESS THE BUTTON FOR MORE THAN 4 SECONDS TO AVOID FACTORY RESET AND THE LOSS OF PRE-PAIRED PROGRAMING OF RECEIVER AND TRANSMITTER!

Note: On every startup, the fan will move forward & backward for 2~3 seconds.

2. Fan Speed: 1-Low Speed → 5-High Speed

3. Reverse switch

4. Timer (1hr/4hrs/8hrs)

5. Indicator

6. 12V battery (23AE/A23)

Install in back of remote

7. Light On/Off

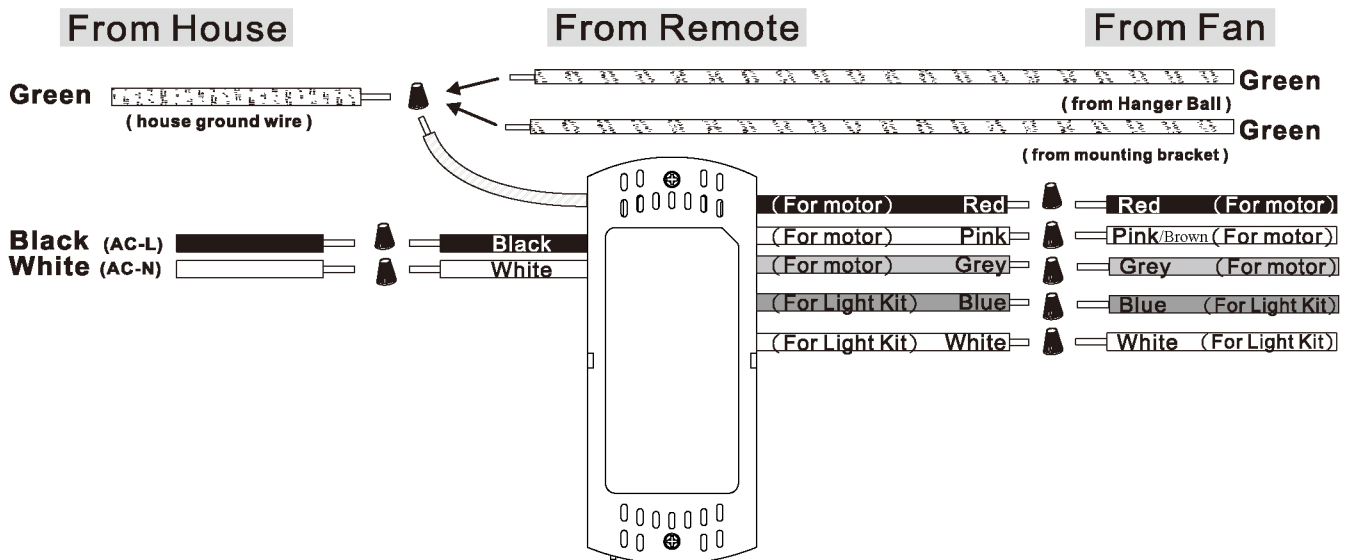
Press the button for changing

TROUBLESHOOTING

In the event the fan does not operate properly, please perform the following steps.

8. Lower the canopy and check that all wires are connected properly.

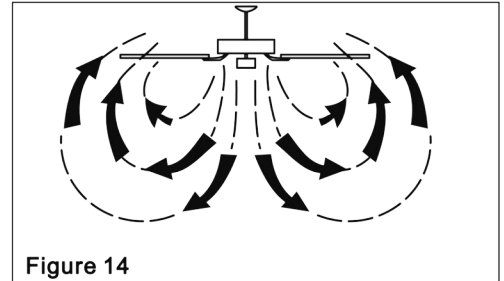
9. Perform the remote Pairing Process



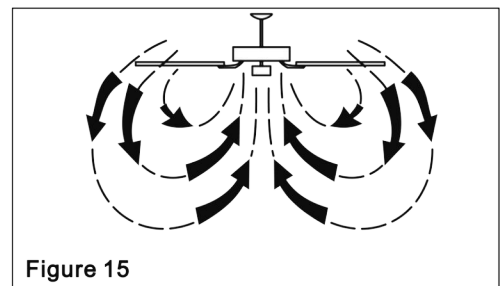
OPERATING INSTRUCTIONS

NOTE: Wait for fan to stop before changing the setting of the slide switch. Turn on the power and check operation of fan. Speed settings for warm or cool weather depend on factors such as the room size, ceiling height, number of fans, and so on.

Warm weather - (Forward) A downward flow creates a cooling effect as shown in Figure 14. This allows you to set your air conditioner on a higher setting without affecting your comfort.



Cool weather - (Reverse) An upward airflow moves warm air off the ceiling area as shown in Figure 15. This allows you to set your heating unit on a lower setting without affecting your comfort.



TROUBLESHOOTING

PROBLEM

SOLUTION

Fan will not start

1. Check circuit fuses or breakers.
2. Check line wire connections to the fan and switch wire connections in the switch housing. CAUTION: Make sure main power is off.

Fan sounds noisy

1. Make sure all motor housing screws are snug.
2. Make sure the screws that attach the fan blade bracket to the motor hub are tight.
3. Make sure wire nut connections are not rubbing against each other or the interior wall of the switch housing. CAUTION: Make sure main power is off.
4. Allow a 24-hour "breaking-in" period. Most noises associated with a new fan disappear during this time.
5. If using an optional light kit, make sure the screws securing the glassware are tight. Check that light bulb is also secure.
6. CAUTION: Only Casa Vieja recommended controls are compatible with this fan. Some fan motors are sensitive to signals from solid-state variable speed controls. If you have installed this type of control, choose and install another type of control.
7. Make sure the upper canopy is a short distance from the ceiling. It should not touch the ceiling.